

## Product datasheet

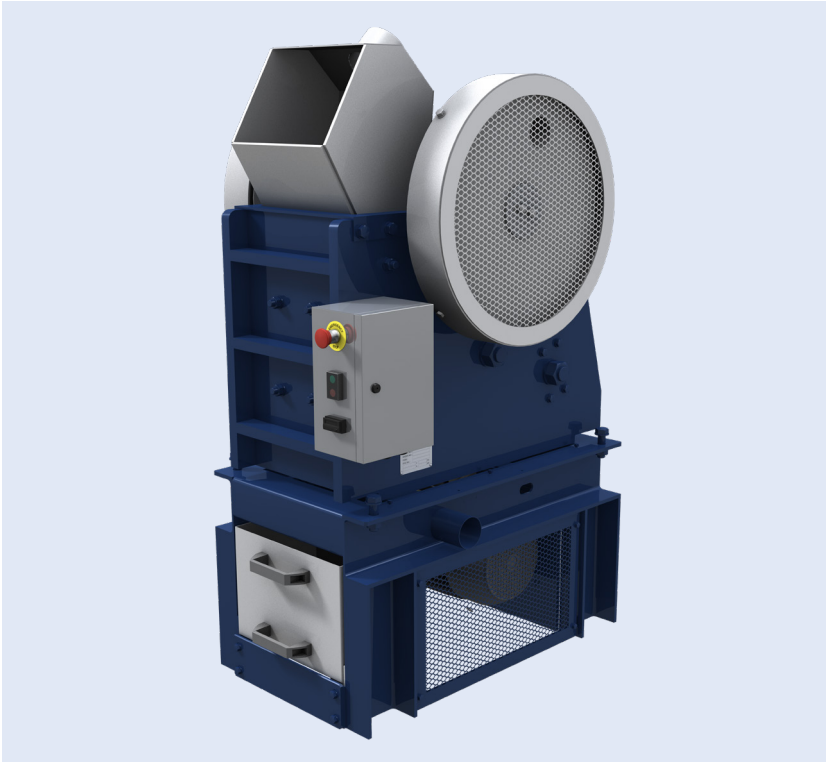
# Essa® JC3000 Jaw Crusher

Well-proven and with flexibility of configuration, the Essa® Model JC3000 Jaw Crusher is a heavy duty, primary jaw crusher used in sample preparation and plant applications.

### Benefits

- **Large core and lump crushing**  
300 mm x 200 mm jaw opening accepts large input feed size up to 170 mm.
- **Reduced capital cost**  
Flexibility of use allows for continuous or batch use in laboratory, field and plant applications.
- **Flexibility of installation**  
Available in upright stand-alone or low-profile configuration.
- **High throughput**  
Rapid and powerful crushing at 3,000 kg per hour throughput.
- **Increased productivity**  
Efficient reduction ratio, with 25 mm product size.
- **Increased availability**  
Designed with a mechanically simple but reliable single toggle for ease of maintenance and repairs.
- **Improved quality**  
Reversible and interchangeable jaw plates extend wear part life.

# High performance and low maintenance



Upright version

## Excellent capabilities

The hardy Essa® JC3000 Jaw Crusher handles high workloads and has been tried and tested in both laboratories and plants, making it a reliable machine with recognisable brand-name quality. It comes in two configurations: either for stand-alone analytical or metallurgical laboratory use, or for continuous use such as in mechanical sampling stations or pilot plants. The footprint dimensions of the upright model are 645 mm x 920 mm. The crusher has a 300 mm x 200 mm jaw inlet and can handle samples up to 170 mm.

## High productivity

A well-proven single toggle jaw crusher, the Essa® JC3000 is a heavy-duty, low-maintenance machine. It readily accepts soft to very hard ore, drill core, rock and similar particulate up to 170 mm, i.e. 85% of its jaw opening. Throughput is generally 3,000 kg per hour and the machine has a good reduction ratio – with 25 mm product size it provides faster and more efficient crushing with reduced process stages. Maintenance downtime is minimised thanks to the simple jaw gap adjustment which provides good control of product sizing, while the use of roller bearings throughout makes the machine reliable at high load capacity.

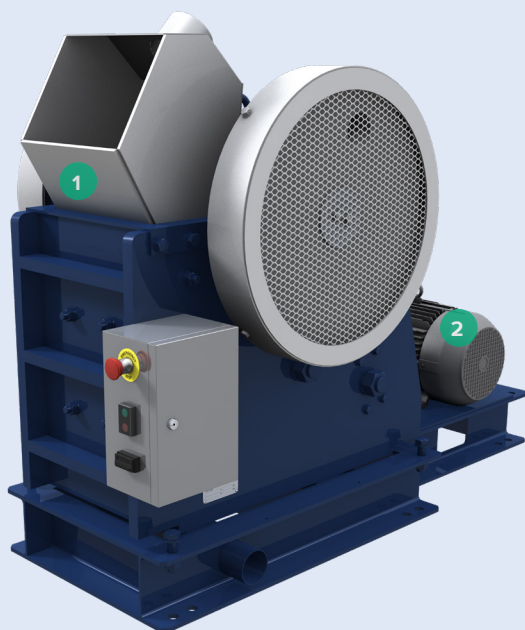
## Flexibility of configuration and heavy-duty constructions

The upright, standalone Essa® Jaw Crusher Model JC3000 has a feed hopper and sample drawer with dust extraction points, while the low-profile configuration has a fabricated steel base for mounting on a customer's support frame or concrete footing. Standard features throughout include rugged, fabricated steel construction, electric pre-wiring with an IP65-enclosed stop/ start and motor protection station, and vertically serrated chrome steel jaw plates which are reversible and interchangeable for extended life.

## Safety features

Safety features of the JC3000 include the full drive guarding which complies with occupational health and safety standards, while the two dust extraction points to remove airborne dust at the inlet and sample drawer greatly improve the health of the operating environment. There is an ergonomically designed feed hopper and easily accessible aluminium sample drawer.

# All-purpose crusher delivering power, versatility and productivity



1. 300 mm x 200 mm jaw opening accepts large input feed size up to 170 mm, suitable for most drill core sample sizes.
2. IP65-rated electric motor totally protected against dust ingress and against low pressure water jets from any direction.

- Roller bearings used throughout for reliability at high load capacity.

Low-profile version

Specifications	
Jaw inlet	300 mm x 200 mm
Maximum feed size	170 mm
Usual product size	25 mm
Maximum product size	50 mm
Throughput at usual product size	3,000 kg/h
Dust extraction points	Two
Dust extraction flow	240 L/s
Electrical requirements (3 phase)	7.5 kW

Upright version	
Mass	1165 kg
Dimensions (length x width x height)	1100 mm x 720 mm x 1535 mm
Shipping mass (approximate)	1215 kg
Shipping dimensions (approximate)	1180 mm x 1180 mm x 1770 mm

Low-profile version	
Dimensions (length x width x height)	1577 mm x 762 mm x 1172 mm

**FLSmidth A/S**  
2500 Valby  
Denmark  
Tel. +45 3618 1000  
info@flsmidth.com

[www.flsmidth.com](http://www.flsmidth.com)

**FLSmidth Inc.**  
Salt Lake City Operations  
Midvale, UT 84047  
USA  
Tel. +1 801 871 7000  
info.sl.c@flsmidth.com

Copyright © 2023 FLSmidth A/S.  
All Rights Reserved. FLSmidth and FLS are (registered) trademarks of FLSmidth A/S. This brochure makes no offers, representations or warranties (express or implied), and information and data contained in this brochure are for general reference only and may change at any time.