

RECLAIM FEEDER

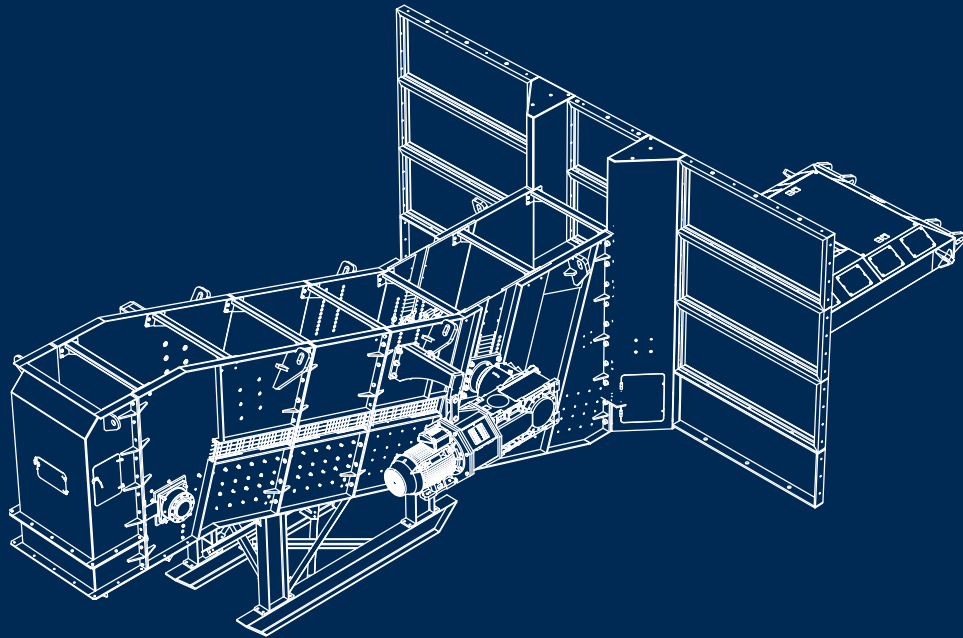
Heavy-duty modular solutions



FLS

FLS Buffalo reclaim feeder

The Buffalo brand started in 1975 and became part of the FLSmidth company in 1999, strengthening our position as a market-leading manufacturer and supplier of feeders, feeder breakers, and sizers. FLS Buffalo equipment is manufactured globally, so that we can offer our customers the most competitive products worldwide.



Key benefits

- Heavy-duty
- Increased mobility
- Improved reliability
- Dependable performance and availability
- Enhanced production
- Easily reclaimed using dozers or front-end loaders
- Easy maintenance
- Safety focused

Designed to meet your unique requirements

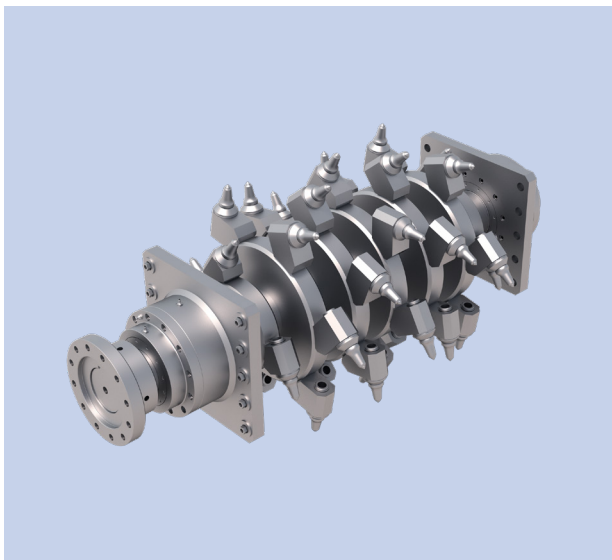
Our range of reclaim feeders offer modular, customisable, economical, and productive solutions for mines of any size.

Stock yards and ROM applications

Reclaim feeders and feeder breakers are utilised to reclaim stockpiles and ROM material at a continuous feed rate. Trucks, front-end loaders, or dozers supply feeders with material, which then deliver the material in a consistent manner to a conveyor belt, sizer, or other process equipment. Our reclaim feeders are an ideal backup system for stacker and reclaimer systems, and they can be implemented for side tipping or back tipping applications to reduce double handling of material.

Modular design

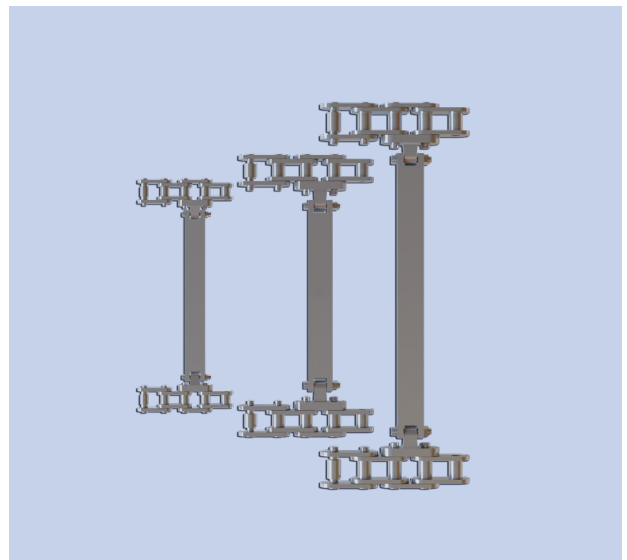
The reclaim feeder's modular design allows for different discharge heights, depending on the required application. We offer loading decks of various lengths to ensure our installations fit our customers' unique requirements. Modularity also allows for transportation within a standard size container.



Breaker drum

Main features

- The Buffalo reclaim feeder is a heavy-duty design, featuring replaceable supports and modular sections. Our reclaim feeders have replaceable individual parts throughout the full length of the feeder.
- Electromechanical and hydraulic drives power our reclaim feeders. Flow control is achieved through adjustable hydraulics, variable speed drives, and gearbox ratios.
- A hydraulic take-up system ensures ideal and consistent chain tensioning on the shaft take-up assembly.
- Auxiliary components, such as wheel assemblies, lights, lubrications systems, and safety features, offer a true fit-for-purpose solution.
- Pitch chains are available in 4-in, 5.5-in, and 6-in options.



Chain's 4", 5.5", 6"

Safety in design

Our reclaim feeder's heavy-duty frame is built in modular sections, which include platforms with handrails for inspection and maintenance access.

Additional safety features

- Hand railing with kick plates
- Dust suppression
- Safety guards and inspection covers
- Curated non-slip grating and tread plates
- Access ways barricading chains

Area illumination

Operational indicator light for when machine is running

Safety signs

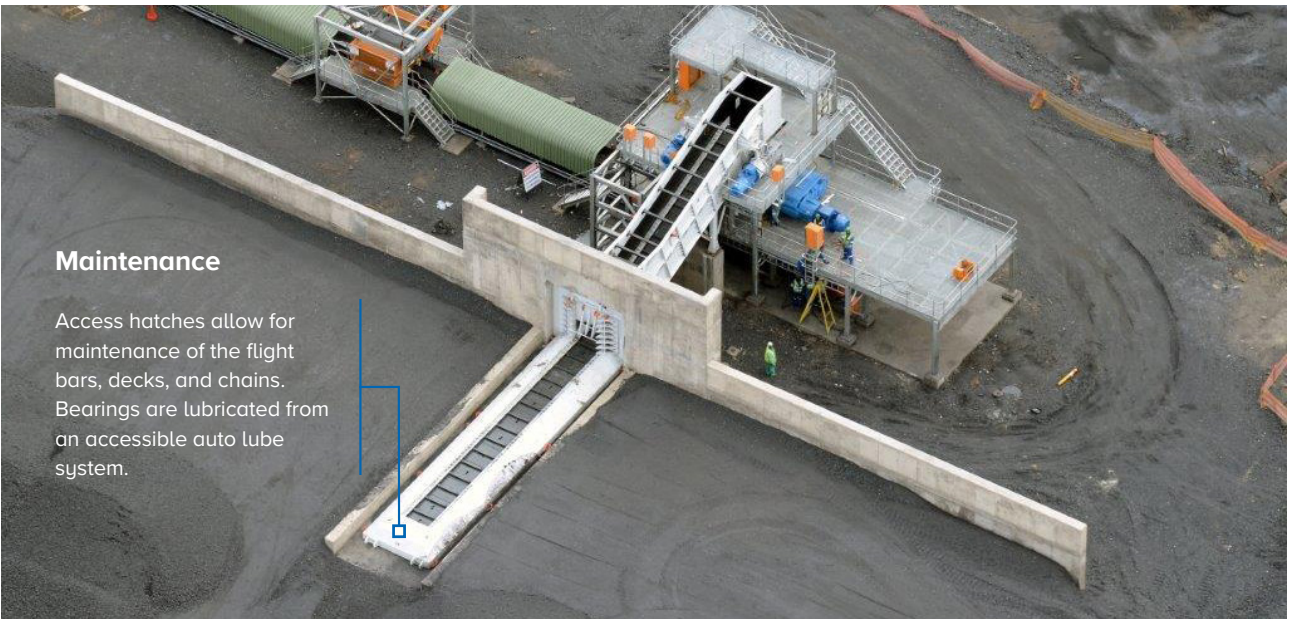
Emergency stop safety bar





Installation options

Our reclaim feeders and feeder breakers may be installed as either a free-standing unit with or without civils, or as a multiunit construction with hoppers or sizers. Our reclaim feeders may also also be pre-assembled in the workshop or containerized and transported to the construction site.

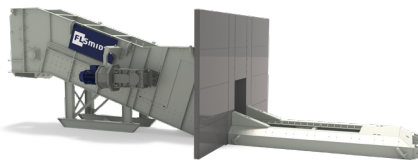


Maintenance

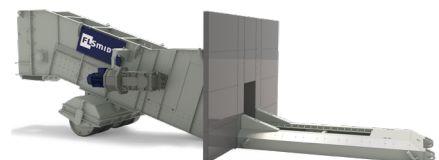
Access hatches allow for maintenance of the flight bars, decks, and chains. Bearings are lubricated from an accessible auto lube system.

Mobility

All Buffalo reclaim feeders are semi-mobile, meaning the customer can relocate the feeder if required. The transformer and motor control center (MCC) are located onboard the reclaim feeder; only the power supply needs to be isolated before relocating the unit.



Skid-mounted / Optional skid-mounted



Wheel-mounted / Optional wheel-mounted

Customer service & spare parts

We approach your project not as suppliers, but as partners invested in your success, ready to provide total lifecycle support to help your plant achieve its full potential.



We offer full support for all of the machines we supply. Installation, commissioning, and maintenance contracts and supervision are all available to all customers.



Spare parts are available 24 hours per day, 7 days per week. Our global presence allows us to execute maintenance and repairs quickly and efficiently.

Technical services

- Erection and commissioning
- Operations and maintenance
- Expert services
- Technical assistance
- Training

Products & parts

- Original OEM spares
- Product review and improvement
- Lifecycle analysis
- Repairs and refurbishments
- Retrofits

Engineering services

- Equipment audits
- Process audits
- Testing
- Erection supervision
- Training

Products & parts

- Project and construction management
- Plant maintenance
- Asset management
- Plant operations

FLS dedicated factories in South Africa and India

Our factories in South Africa (near Johannesburg) and India (near Delhi) to accommodate the service business and ready to supply the spare parts for our customers across globe. Our regional Sales team is fully committed to support with maintaining suitable spares based on customer requirements. Open dialogue between customers and sales representatives help in planning the inventories for faster delivery time with minimal downtime of equipment.

Follow us here



flsmidth.com/linkedin



flsmidth.com/twitter



flsmidth.com/facebook



flsmidth.com/instagram



flsmidth.com/youtube

Contact us

FLSmidth A/S

2500 Valby
Denmark
Tel. +45 36 18 10 00
info@flsmidth.com

FLSmidth (Pty) Ltd.

FLSmidth South Africa (Pty) Ltd.
Gauteng, South Africa 1715
Tel. +27 10 210 4000
flsm-za@flsmidth.com

FLSmidth Private Limited

FLSmidth House
Chennai, India
Tel. +91 44 4748 1000
indiainfo@flsmidth.com



flsmidth.eco/contact

Copyright © 2023 FLSmidth A/S. All Rights Reserved. FLSmidth and FLS are (registered) trademarks of FLSmidth A/S. This brochure makes no offers, representations or warranties of any kind (express or implied), and information and data contained in this brochure are for general reference only and may change at any time. FLSmidth does not guarantee or make any representation regarding the use or the results of the information or the data provided in the brochure in terms of its correctness, accuracy, reliability or otherwise, and shall not be liable for any loss or damage of any kind incurred as a result of the use of the information or data provided.